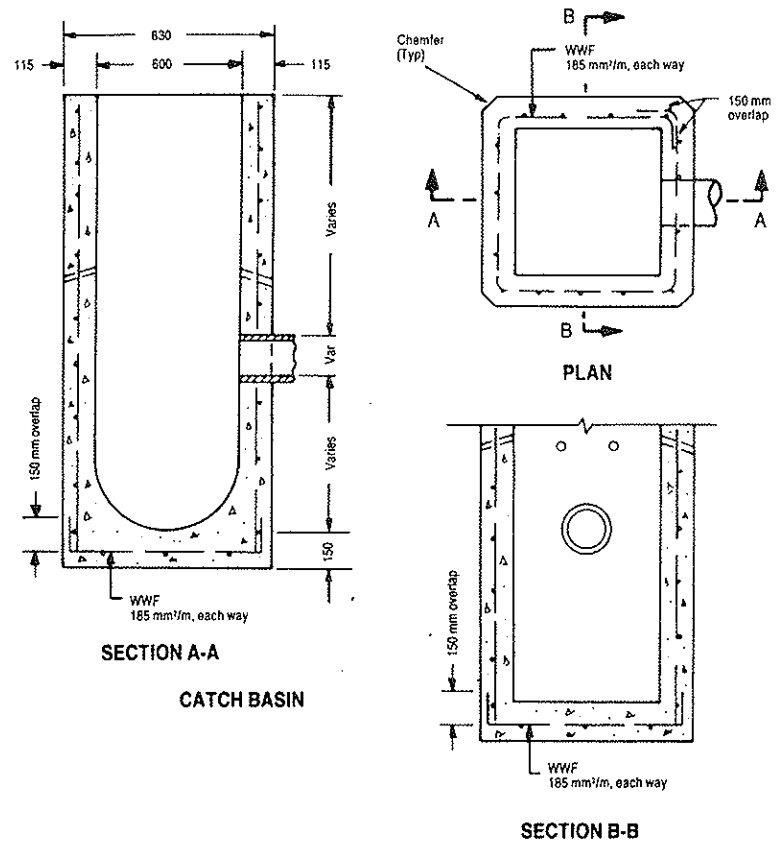


DITCH INLET
CATCH BASIN

SLOPE OF GRATING	DIMENSIONS	
	A	B
2 : 1	675	50
3 : 1	645	65
4 : 1	625	75
6 : 1	605	85



SECTION A-A
CATCH BASIN

SECTION B-B

NOTES:

- A Available with 150 mm wall thickness.
- B All reinforcing steel shall have 25 mm min cover.
- C Weep holes, where required, shall be placed so that the bottom of the weeper on the inside and the top of the weeper on the outside are level.
- D All dimensions are in millimetres unless otherwise specified.



CON CAST PIPE

R.R. #3, Guelph, Ontario N1H 6H9
Tel: 1-800-668-PIPE (7473)

CON CAST PIPE

No. 705.02

600 x 600 mm
**PRECAST CONCRETE
CATCH BASIN AND
DITCH INLET CATCH BASIN**
DEPTH 4.0 m MAX