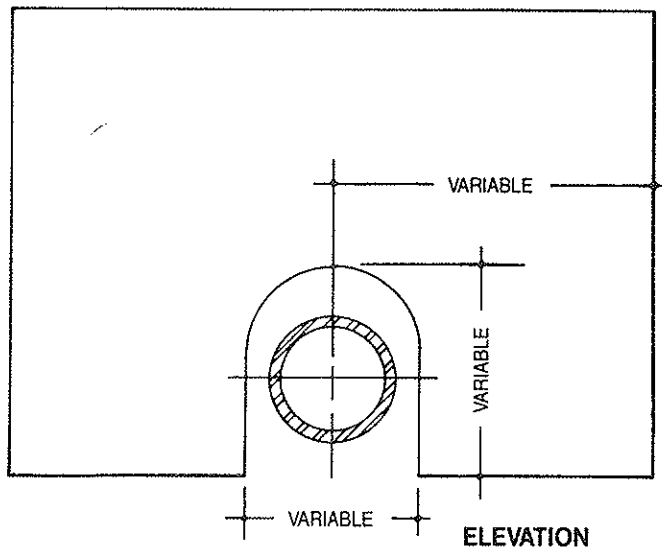


SECTION



SPECIFICATIONS

- MANUFACTURED TO A.S.T.M. C-478 SPECIFICATIONS
- COMPLIES TO M.T.C. SPECIFICATIONS
- CONCRETE STRENGTH - 27.6 MPa
- STEEL DESIGN IN ACCORDANCE WITH A.S.T.M. C-478
- ALL REINFORCING IS DESIGNED FOR MIN. 25 mm COVER
- ALUMINUM STEPS AT 300 mm CENTRES
- DESIGNED FOR A DEPTH OF 10 m
- 1200 mm 127 mm WALL - 1324 kg/m
- 1500 mm 152 mm WALL - 1927 kg/m
- 1800 mm 178 mm WALL - 2695 kg/m
- X = .203 m FOR 1200 mm CHAMBER
= .305 m FOR 1500 mm CHAMBER
= .305 m FOR 1800 mm CHAMBER
- Y = .305 m FOR 1200 mm CHAMBER
= .430 m FOR 1500 mm CHAMBER
= .430 m FOR 1800 mm CHAMBER
- VALVE STEM OPENING IN FLAT CAP (OPTIONAL)
- OPENING IN FLAT CAP MAY BE OFFSET OR IN THE CENTRE



CON CAST PIPE

R.R. #3, Guelph, Ontario N1H 6H9
Tel: 1-800-668-PIPE (7473)

CON CAST PIPE

**1200 mm, 1500 mm and 1800 mm
REINFORCED PRECAST
CONCRETE VALVE CHAMBER**