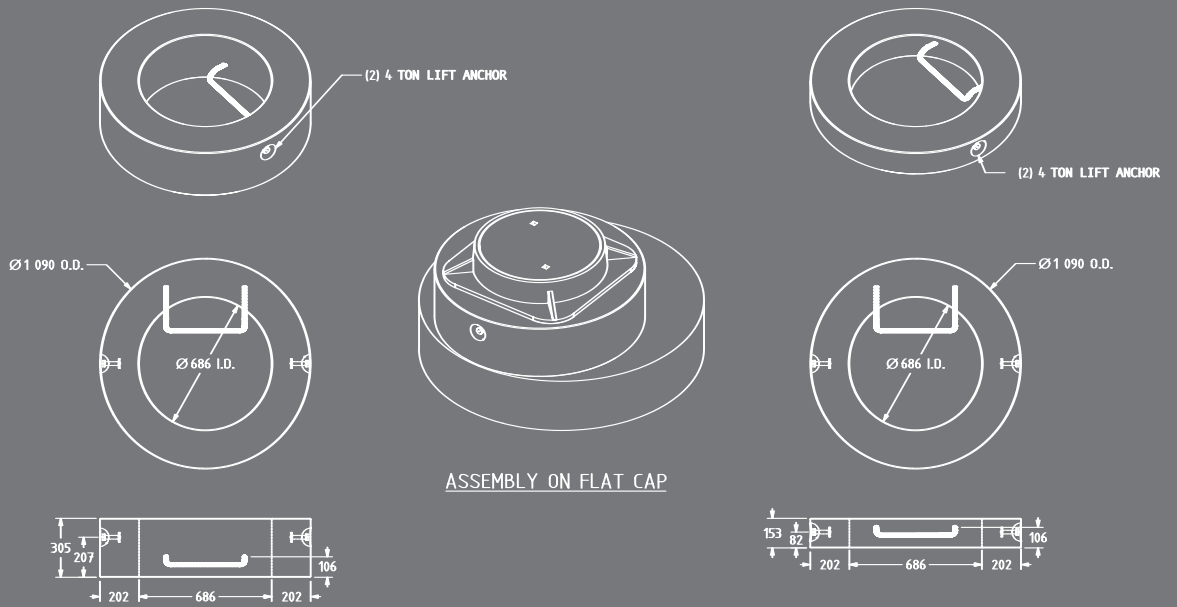
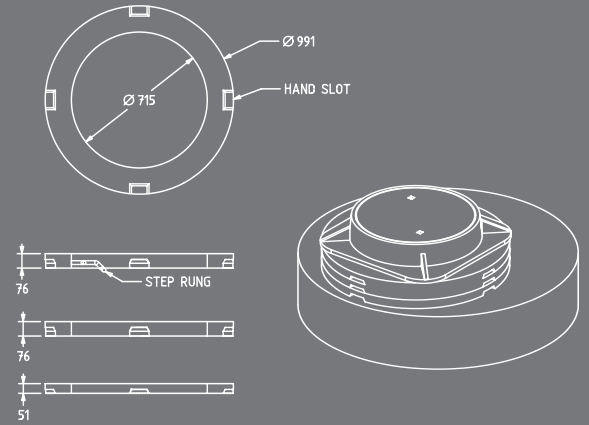
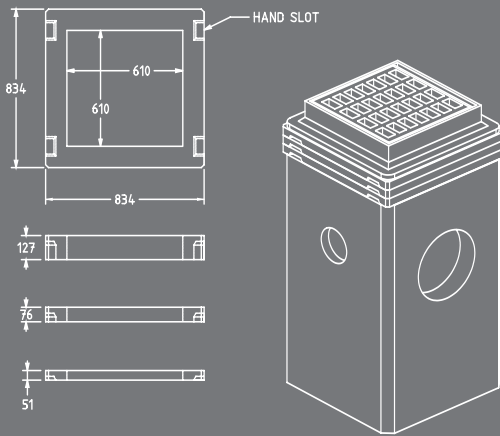


Grade Rings



685 mm DIAMETER x 305 mm HIGH GRADE RING

685 mm DIAMETER x 152 mm HIGH GRADE RING

raising the bar

Grade Rings

TYPE	DIMENSIONS (mm)		NOMINAL THICKNESS (mm)	STEP RUNG	MASS PER PIECE (kg)	BUNDLE		LIFTING CONFIGURATION
	INSIDE	OUTSIDE				PIECES	MASS (kg)	
MH	715	991	50	NO	52	12	588	HAND SLOTS
	715	991	75	NO	75	8	552	HAND SLOTS
	715	991	75	YES	69	8	552	HAND SLOTS
	686	1090	150	YES	215	N/A	N/A	2-4 TON SLA ¹
	686	1090	300	YES	430	N/A	N/A	2-4 TON SLA
CB	610 x 610	834 x 834	50	NO	36	12	492	HAND SLOTS
	610 x 610	834 x 834	75	NO	51	8	480	HAND SLOTS
	610 x 610	834 x 834	125	NO	100	N/A	N/A	2-4 TON SLA

¹ SWIFT LIFT ANCHORS

Product Info

- Grade rings are also known as adjustment units.
- Conform to OPSD 704.010 Maintenance Hole and Catch Basin Precast Concrete Adjustment Rings.
- Compatible with all precast concrete maintenance holes and catch basins in Ontario.
- Manufactured to CAN/CSA-A257 Series-M92 Standards for Concrete Pipe.

Typical Installation

1. Place a bed of mortar on top of the concrete flat cap, taper top (cone), or catch basin.
2. Press the first grade ring into the bed of mortar, making sure the ring is level and fully seated into the mortar. The ring should be concentric with the MH or CB opening.
3. To place an additional grade ring, apply either a bed of mortar or a strip of Modutape along the top surface of the installed ring.
4. Seat the next ring and check to ensure it is level.
5. Add more rings to achieve the desired height by repeating steps 3 and 4 as needed.
6. Allow at least 160 mm for the metal frame. Make final adjustments to the stack of rings by placing small concrete spacers (50 mm or less) on top of the final grade ring. Vary the heights of the spacers to suit the final elevation and slope of the metal frame.
7. Apply a bed of mortar to the top of the final ring and seat the metal frame into position.
8. Check the position of the frame and remove and adjust if necessary.



CONTACT:
 sales@concastpipe.com or 1-800-668-PIPE(7473)
CON CAST PIPE
 299 Brock Road South, R.R. #3
 Guelph, Ontario N1H 6H9
 www.concastpipe.com

