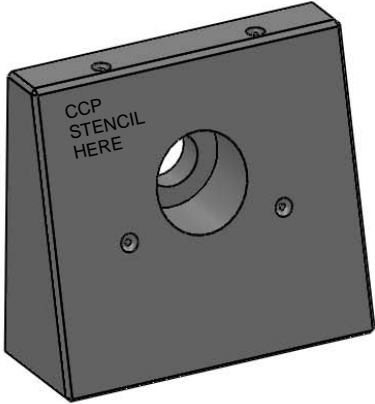
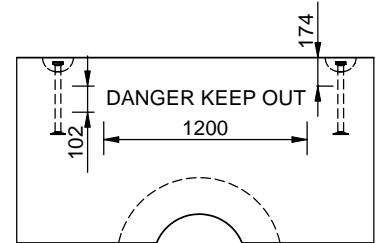


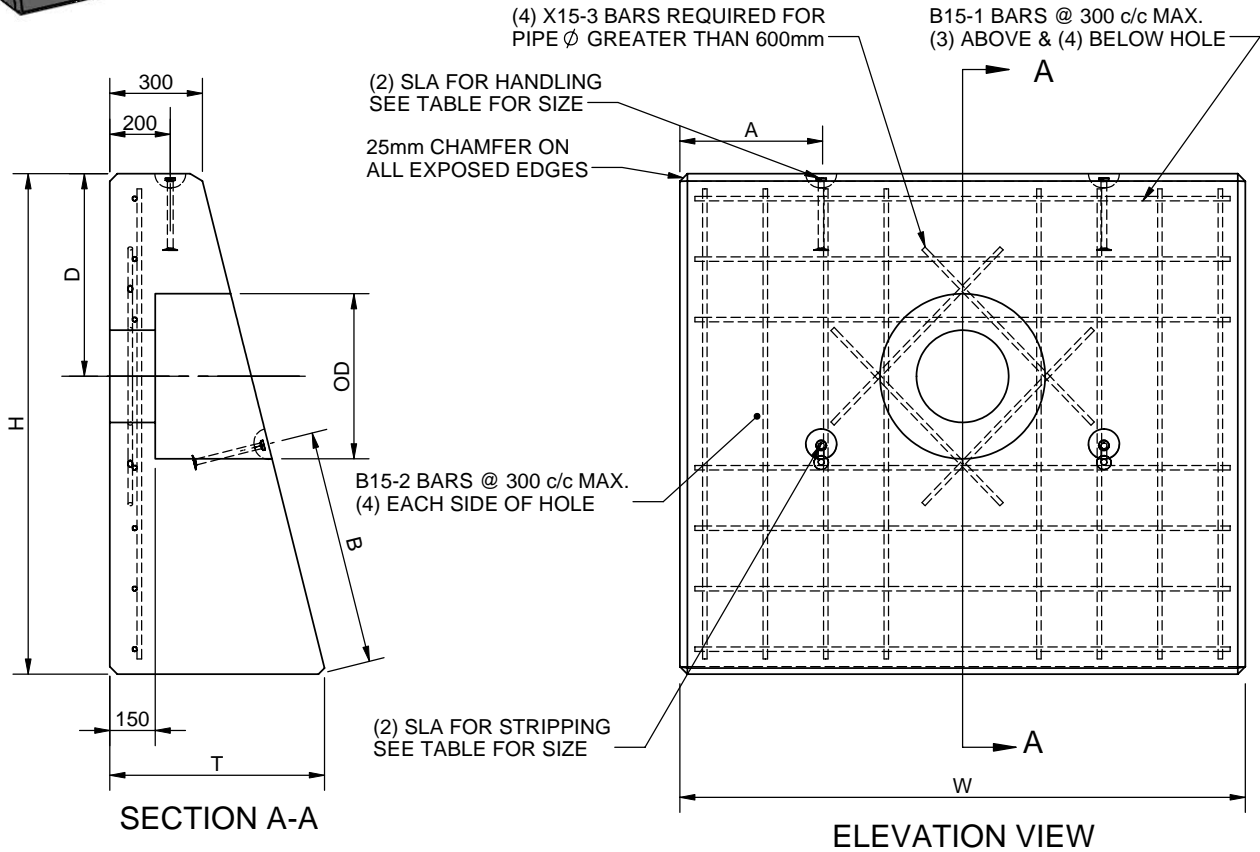
Part ID	Pipe ID	OD	H	D	T	W	Anchor Size	A	B	B15-1	B15-2	X15-3	Mass (kg)
HA03001	305	546	1655	670	715	1870	4TON x 240 (9 1/2")	468	785	1770	1555		3668
HA03751	381	635	1745	715	735	2040	4TON x 240 (9 1/2")	510	822	1940	1645		4255
HA04501	457	724	1830	760	760	2210	4TON x 240 (9 1/2")	553	854	2110	1730		4892
HA05251	533	813	1920	805	780	2385	4TON x 240 (9 1/2")	596	888	2285	1820		5582
HA06001	610	902	2010	850	805	2555	4TON x 240 (9 1/2")	639	921	2455	1910	1110	6336
HA06751	686	991	2100	895	825	2725	4TON x 240 (9 1/2")	681	954	2625	2000	1186	7114
HA07501	762	1080	2190	940	845	2900	8TON x 210 (8 1/4")	725	987	2800	2090	1262	7958
HA08251	838	1168	2275	985	870	3070	8TON x 210 (8 1/4")	768	1018	2970	2175	1338	8854



CCP STENCILING REQUIREMENTS
 CONCAST LOGO
 (SIZE) ENDWALL
 DATE OF MANUFACTURE



EMBOSSING DETAIL ON VERTICAL FACE



ALL DIMENSIONS ARE IN mm
 DRAWINGS ARE NOT TO SCALE
 WWF SHEETS TO CSA G.30.5 AND CSA G.30.15
 REINFORCING TO CSA G.30.18 GRADE 400W
 PRECAST MFG. TO OPSS 1821 (APRIL / 2004)

MIN. CONC STRENGTH 30 MPa
 CLEAR COVER = 75 mm ± 20 mm
 TOLERANCES TO CSA A23.4-05 : 12.2
 APPROX. MASS kg
 STRIP CONC. STRENGTH 20 MPa
 AIR ENTRAINMENT 5% TO 8%

CON CAST PIPE STANDARD DRAWING

STD. PART HAXXXX2

TITLE
CONCRETE ENDWALL FOR PIPE LESS THAN 900mm Ø HAXXXX2 W/ GRATE

REV.	DESCRIPTION	ENG.	DATE
1	RENAME HDWL TO ENDWALL. CONVERT TO SOLIDWORKS	AEM	20/04/10

DRAWN BY	CHECKED BY	DATE	FILE	PAGE
AEM	SW	4/9/2010	Headwall	1