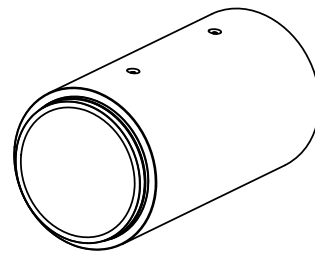


S.L.A. TO BE LOCATED WHERE INNER AND ELLIPTICAL CAGE MEET (TRIPLE CAGE DESIGN ONLY)



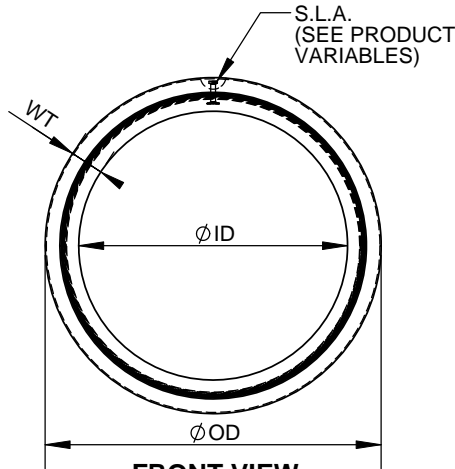
ISOMETRIC VIEW

ENGINEER STAMP (IF REQUIRED)

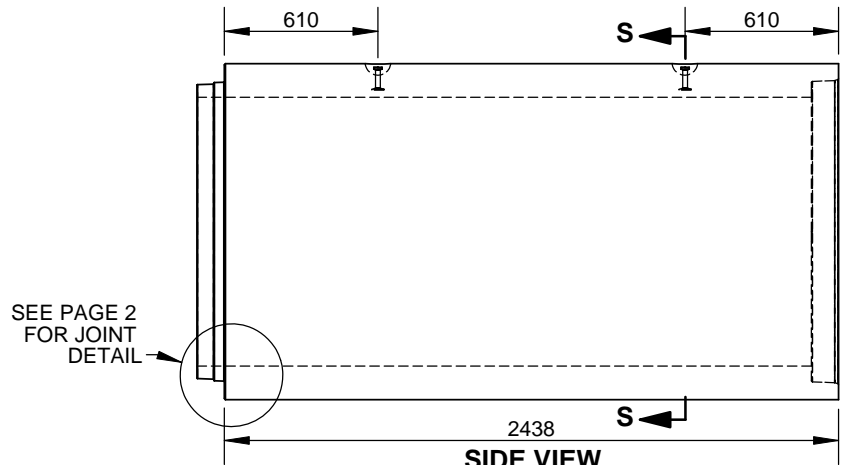
NOTES:

1. S.L.A. ON SINGLE OR DOUBLE CAGE DESIGN TO BE LOCATED ANYWHERE ON THE CIRCUMFERENCE
2. ENSURE S.L.A. RECESSES ARE FREE DRAINING WHEN STORE IN THE YARD

SECTION S



FRONT VIEW



SIDE VIEW

PRODUCT VARIABLES

PART ID	NOMINAL SIZE	ID	OD	WT	MASS (KG)	CLASS AVAILABILITY			MFG	SLA	
						65D	100D	140D		SPEC.	PART ID
PA1050X4	1050	1067	1334	133	3115	Y	Y	Y	GUE	4T 3-1/2	RLA140090
									OAK	4T 3-1/2 DH	RLA040090
PA1200X48	1200	1219	1473	127 BW	3475	Y	Y	Y	OAK	4T 3-1/2 DH	RLA040090
PA1200X49	1200	1219	1511	146 CW	3810	Y	Y	Y	GUE	4T 4-1/4	RLA140110
PA1350X48	1350	1372	1652	140 BW	4115	Y	Y	Y	OAK	4T 4-1/4 DH	RLA050110
PA1350X49	1350	1372	1689	159 CW	4731	Y	Y	Y	GUE	4T 4-3/4	RLA140120
									OAK	4T 4-1/4 DH	RLA050110
PA1500X4	1500	1524	1829	152	5180	Y	Y	Y	GUE	4T 4-3/4	RLA140120
PA1650X4	1650	1676	2007	165	6101	Y	Y	Y	GUE	4T 4-3/4	RLA140120
PA1800X4	1800	1829	2184	178	6991	Y	Y	Y	GUE	4T 4-3/4	RLA140120
PA1950X4	1950	1981	2362	191	8110	Y	Y	Y	GUE	8T 5-3/4	RLA180145
PA2100X4	2100	2134	2540	203	9290	Y	Y	Y	GUE	8T 6-1/4	RLA180160
PA2250X4	2250	2286	2718	216	10520	Y	Y	Y	GUE	8T 6-3/4	RLA180170
PA2400X4	2400	2438	2896	229	11880	Y	Y	Y	GUE	8T 7-1/8	RLA180180
PA2550X4	2550	2591	3073	241	12637	Y	Y	Y	GUE	8T 7-3/4	RLA180195
PA2700X4	2700	2743	3251	254	14035	Y	Y	Y	GUE	8T 8-1/4	RLA180210
PA3000X4	3000	3048	3607	279	17185	Y	Y	Y	GUE	8T 9-1/4	RLA102254

ALL DIMENSIONS ARE IN mm  
DRAWINGS ARE NOT TO SCALE  
REFER TO PIPE STEEL DESIGN FOR  
REINFORCING DETAILS

MIN. CONC STRENGTH 30-40 MPa  
BASE ON CLASS  
CLEAR COVER DEPENDS ON CAGE  
DESIGN. REF TO CSA 257.2  
TOLERANCES TO CSA A23.4-09

CON CAST PIPE (CCP) STANDARD DRAWING

STD. CSA 257.2 REV OCT 2009 PART PAXXXXX4

TITLE  
REINFORCED CONCRETE PIPE  
1050 - 3000 mm DIAMETER

4	CORRECT MASS VALUES	CW	18/OCT/11
3	UPDATE AS PER SOLIDWORKS STANDARD DWG	SW	4/JAN/11
2	UPDATE MASS AS PER PRICE LIST	AEM	5/FEB/10
REV.	DESCRIPTION	ENG.	DATE

DRAWN BY SW	CHECKED BY CW	DATE 4/JAN/11	FILE Pipe	PAGE 1 OF 2
----------------	------------------	------------------	--------------	----------------

**CON CAST PIPE** RR 3 Guelph, ON N1H 6H9

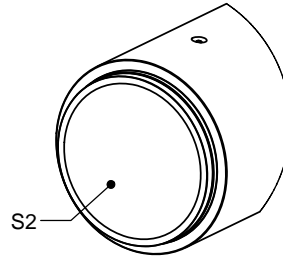
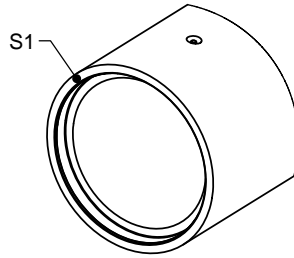
Fax: (519) 763-1956

1-800-668-7473

www.concastpipe.com

STENCIL (S1)  
(SIZE) X (CLASS)

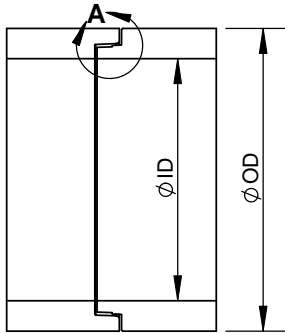
STENCIL (S2)  
(CCP-GUELPH / OCP-OAKVILLE)  
CSA A257.2  
(SIZE) X (CLASS)  
TYPE 50  
DATE OF MFG



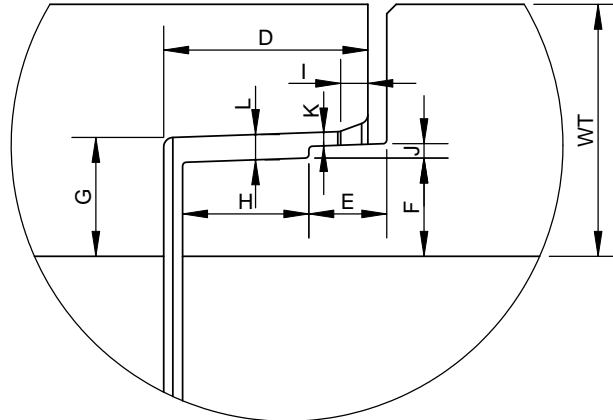
ENGINEER STAMP (IF REQUIRED)

ISOMETRIC  
BELL END VIEW

ISOMETRIC  
SPIGOT END VIEW



PIPE JOINT  
SECTION VIEW



DETAIL A

PART ID	NOMINAL SIZE	ID	OD	WT	D	E	F	G	H	I	J	K	L
PA1050X4	1050	1067	1334	133	108.0	41.2	52.0	62.9	66.8	15.9	7.6	3.7	11.3
PA1200X48	1200	1219	1473	127 BW	108.0	44.5	53.0	74.9	63.5	19.1	7.6	3.7	11.3
PA1200X49	1200	1219	1511	146 CW	108.0	41.2	52.2	63.1	66.8	15.9	7.6	3.7	11.3
PA1350X48	1350	1372	1652	140 BW	108.0	44.5	49.3	58.4	63.5	22.2	7.6	3.7	11.3
PA1350X49	1350	1372	1689	159 CW	108.0	41.2	48.2	59.1	66.8	15.9	7.6	3.7	11.3
PA1500X4	1500	1524	1829	152	120.7	53.9	55.8	64.7	66.8	22.2	7.6	3.7	11.3
PA1650X4	1650	1676	2007	165	127.0	60.2	62.2	71.1	66.8	22.2	7.6	3.7	11.3
PA1800X4	1800	1829	2184	178	127.0	60.2	65.7	74.6	66.8	31.8	7.6	3.7	11.3
PA1950X4	1950	1981	2362	191	127.0	57.1	71.4	82.2	69.9	31.8	8.9	4.4	13.3
PA2100X4	2100	2134	2540	203	127.0	57.1	77.7	88.5	69.9	31.8	8.9	4.4	13.3
PA2250X4	2250	2286	2718	216	127.0	57.1	84.1	94.9	69.9	31.8	8.9	4.4	13.3
PA2400X4	2400	2438	2896	229	127.0	57.1	90.4	101.2	69.9	31.8	8.9	4.4	13.3
PA2550X4	2550	2591	3073	241	127.0	57.1	96.4	107.5	69.9	31.8	8.9	4.4	13.3
PA2700X4	2700	2743	3251	254	127.0	57.1	103.1	114.0	69.9	31.8	8.9	4.4	13.3
PA3000X4	3000	3048	3607	279	152.0	82.1	99.9	110.8	69.9	31.8	8.9	4.4	13.3

ALL DIMENSIONS ARE IN mm  
DRAWINGS ARE NOT TO SCALE

MIN. CONC STRENGTH 30-40 MPa  
BASE ON CLASS  
CLEAR COVER DEPENDS ON CAGE  
DESIGN. REF TO CSA 257.2  
TOLERANCES TO CSA A23.4-09

CON CAST PIPE (CCP) STANDARD DRAWING

STD. CSA 257.2      REV OCT 2009      PART PAXXXX4

TITLE

REINFORCED CONCRETE PIPE  
1050 - 3000 mm DIAMETER  
JOINT AND STENCILING DETAILS

2	ADD ENG. STAMP	CW	19/OCT/11
1	AS PER SOLIDWORKS STANDARD	SW	4/JAN/11
REV.	DESCRIPTION	ENG.	DATE

DRAWN BY SW	CHECKED BY CW	DATE 4/JAN/11	FILE Pipe	PAGE 2 OF 2
----------------	------------------	------------------	--------------	----------------