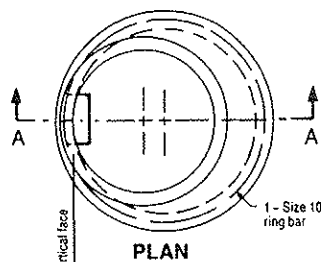
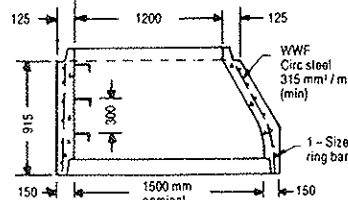


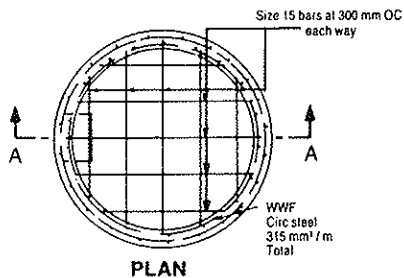
1500 to 1200 mm Dia



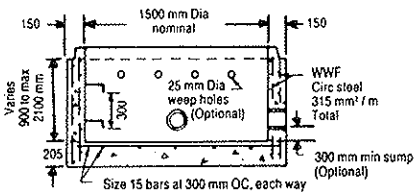
PLAN



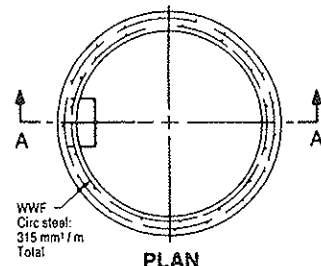
SECTION A-A
TRANSITION CONE



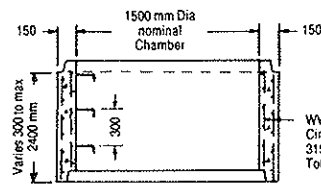
PLAN



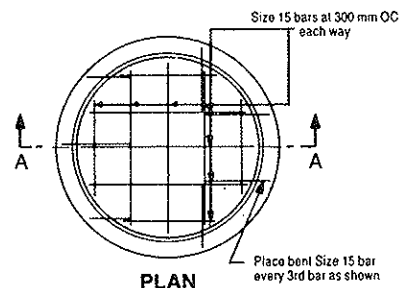
SECTION A-A
MONOLITHIC BASE



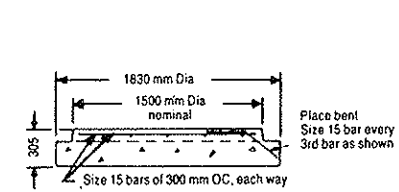
PLAN



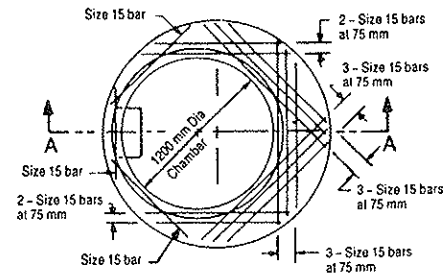
SECTION A-A
RISER SECTION



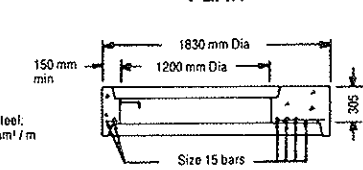
PLAN



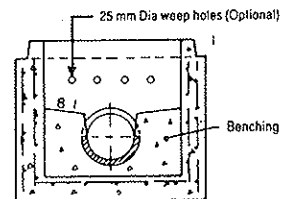
SECTION A-A
BASE SLAB



PLAN



SECTION A-A
TRANSITION SLAB



BENCHING DETAIL
(Optional)

NOTES:

- A Max straight through pipe size: 825 mm dia.
Max right angle installation pipe size: 600 mm dia.
- B All reinforcing steel shall have 25 mm min cover.
- C Weep holes, where required, shall be placed so that the bottom of the weeper on the inside and the top of the weeper on the outside are level.
- D All dimensions are in millimetres unless otherwise specified.
- E Structures exceeding 5.0 m in depth to include safety grate as per OPSD-404.02.



CON CAST PIPE

R.R. #3, Guelph, Ontario N1H 6H9
Tel: 1-800-668-PIPE (7473)

CON CAST PIPE

No. 701.04

**1500 mm Dia.
PRECAST CONCRETE
MAINTENANCE HOLES (COMPONENTS)
DEPTH - 10.0 m MAX**