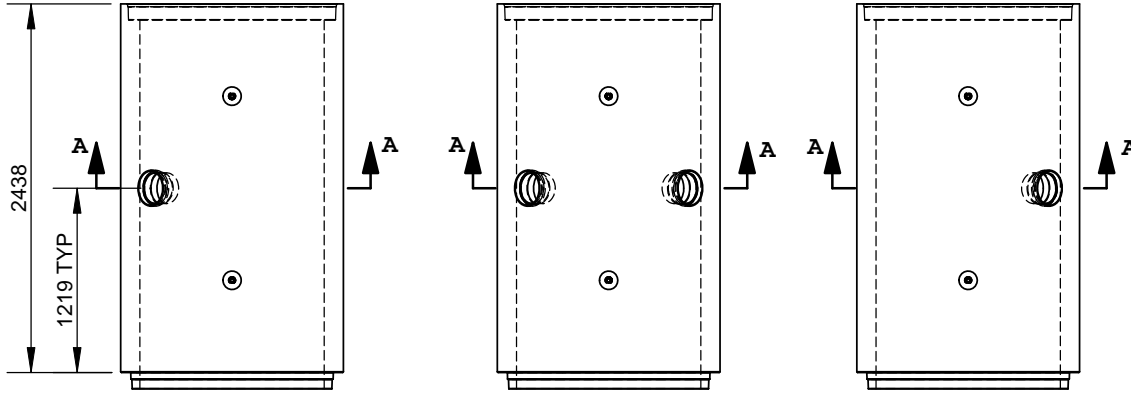


ADD'L STENCIL
(SIZE) PVC TEE
(DIRECTION)



ISOMETRIC VIEW



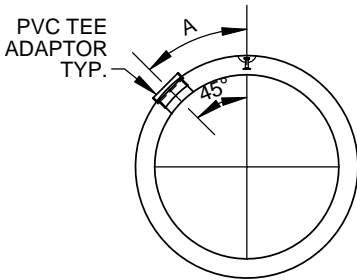
TEE AT LEFT

TEE AT BOTH SIDE

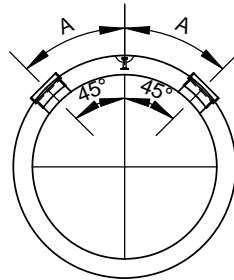
TEE AT RIGHT

PLAN VIEW (AS INSTALLED)

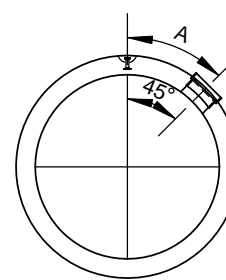
PVC TEE	HOLE SIZE
100	116
125	155
150	172
200	229
250	285
300	337
375	417



TEE AT LEFT



TEE AT BOTH SIDES



TEE AT RIGHT

SPIGOT END VIEW (AS INSTALLED)

PIPE SIZE	A
975	489
1050	523
1200BW	579
1350BW	649
1500	718
1650	788
1800	858
1950	928
2100	997
2250	1067
2400	1137
2550	1207
2700	1277
3000	1416

PART ID STRUCTURE

PTxxxxc4w-20td

(xxxx) PIPE SIZE: 0975; 1050; 1200; 1350; 1500 etc.
(c) PIPE CLASS: 2 - 50-D; 3 - 65-D; 4 - 100-D; 5 - 140-D
(w) FOR 1200 AND 1350: 8 - B-WALL; 9 - C-WALL
(t) TEE SIZE CODE: 1 - 100; 2 - 125; 3 - 150; 4 - 200; 5 - 250; 6 - 300; 7 - 375
(d) TEE DIRECTION: L - LEFT; R - RIGHT; B - BOTH

NOTE: VALUE A IS MEASURED ON OUTSIDE PIPE CIRCUMFERENCE.

ENGINEER STAMP (IF REQUIRED)

ALL DIMENSIONS ARE IN mm
DRAWINGS ARE NOT TO SCALE
ALL VIEWS ARE AS INSTALLED
RCP IS BUILT ACCORDING TO CSA A257.2
VALUE "A" IS MEASURED ON OUTSIDE PIPE CIRCUMFERENCE
PVC ADAPTORS ARE MORTARED OR EPOXIED

TEE LOCATION TOLERANCE ± 50

CON CAST PIPE (CCP) STANDARD DRAWING

STD. CSA A257.2

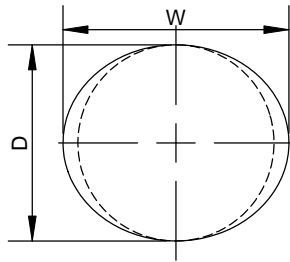
PART PTXXXXX4-20XX

TITLE
**REINFORCED CONCRETE PIPE
975 - 3000 mm
STANDARD PVC TEE
(BY CORING)**

0	INITIAL RELEASE	SW	29FEB12
REV.	DESCRIPTION	ENG.	DATE

DRAWN BY SW	CHECKED BY AEM	DATE 29/FEB/12	FILE PipeTeeLarge	PAGE 1 OF 2
----------------	-------------------	-------------------	----------------------	----------------

ADD'L STENCIL
(SIZE) PVC TEE
(DIRECTION)

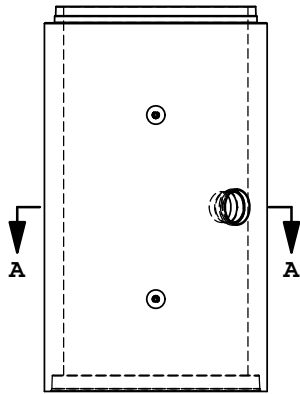


SCRIBED HOLE DIMENSION

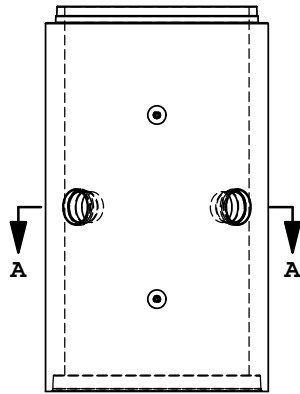
PVC TEE	D	W
100	116	116
125	155	155
150	172	172
200	229	229
250	285	287
300	337	340
375	417	425 (FOR 975 - 1800) 419 (FOR 1950 - 3000)



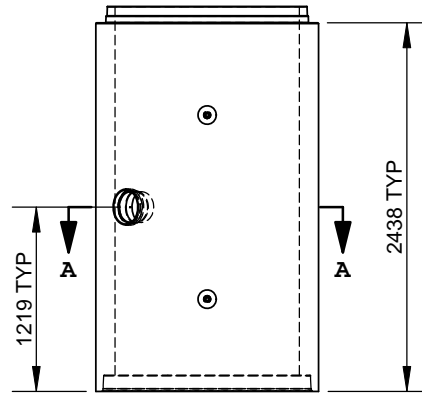
ISOMETRIC VIEW



TEE AT LEFT

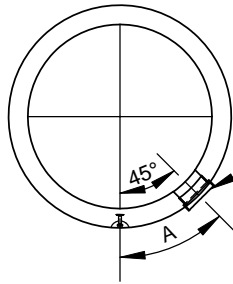


TEE AT BOTH SIDE

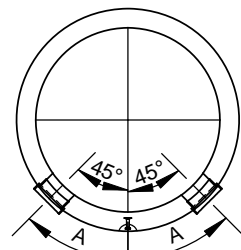


TEE AT RIGHT

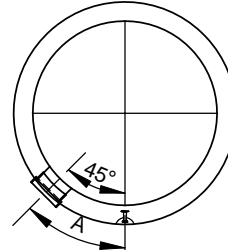
ELEVATION VIEW (AS POURED)



TEE AT LEFT



TEE AT BOTH SIDES



TEE AT RIGHT

PLAN (SPIGOT END) VIEW (AS POURED)

PIPE SIZE	A
975	489
1050	523
1200BW	579
1350BW	649
1500	718
1650	788
1800	858
1950	928
2100	997
2250	1067
2400	1137
2550	1207
2700	1277
3000	1416

PART ID STRUCTURE

PTxxxxc4w-20td

(xxxx) PIPE SIZE: 0975; 1050; 1200; 1350; 1500
(c) PIPE CLASS: 2 - 50-D; 3 - 65-D; 4 - 100-D; 5 - 140-D
(w) FOR 1200 AND 1350: 8 - B-WALL; 9 - C-WALL
(t) TEE SIZE CODE: 1 - 100; 2 - 125; 3 - 150; 4 - 200; 5 - 250; 6 - 300; 7 - 375
(d) TEE DIRECTION: L - LEFT; R - RIGHT; B - BOTH

NOTE: VALUE A IS MEASURED ON OUTSIDE PIPE CIRCUMFERENCE.

ENGINEER STAMP (IF REQUIRED)

ALL DIMENSIONS ARE IN mm
DRAWINGS ARE NOT TO SCALE
ALL VIEWS ARE AS POURED
RCP IS BUILT ACCORDING TO CSA A257.2
VALUE "A" IS MEASURED ON OUTSIDE PIPE CIRCUMFERENCE
PVC ADAPTORS ARE MORTARED OR EPOXIED

TEE LOCATION TOLERANCE ± 50

CON CAST PIPE (CCP) STANDARD DRAWING

STD. CSA A257.2

PART PTXXXXX4-20XX

REINFORCED CONCRETE PIPE
975 - 3000 mm
STANDARD PVC TEE
(BY SCRIBING)

0	PROPOSED STANDARD			DRAWN BY	CHECKED BY	DATE	FILE	PAGE
REV.	DESCRIPTION	ENG.	DATE	DRWN BY	CHKD BY	DD/MON/YY	PipeTeeLarge	2 OF 2