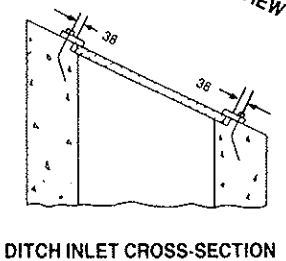
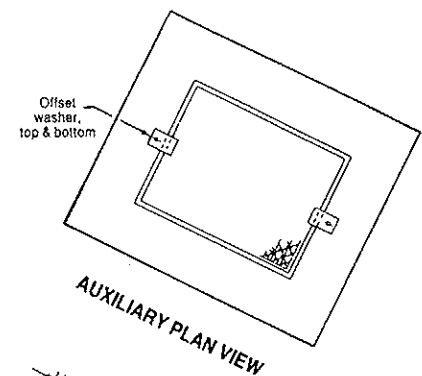


Grating Type	Grating Size	
	Length	Width
A	767	768
B	1338	768
C	1465	768



NOTES:

A MATERIALS:

- a Bearing bars - welding quality steel having the minimum tensile strength of SAE-1015.
- b Reticuline bars - welding quality steel having the minimum tensile strength of SAE-1010.
- c Rivets flat head to SAE-1015.

2 FASTENER:

After manufacture, the grate and assembly (except bolt) shall be hot-dipped galvanized in accordance with CSA standard G164. Only the screw is to receive a liberal coating of white non-staining grease.

3 RETICULINE BARS:

Reticuline bars may be crimped or straight, maximum length of the reticuline bar parallel to the bearing bar is 40 mm at each rivet.

A FINISH:

The grate shall be hot dipped galvanized in accordance with CSA standard G164.

B TOLERANCES:

Tolerances shall be as shown in the Standard Specification for Metal Grating and Metal Grating Treads of the Metal Grating Institute.

C Standard Metal Grating Institute marking: RF-37-5

D WELDING:

End bearing bars to be welded to angle bar along both legs with a 5mm fillet weld.
Other bearing bars to be spot welded on each end to the angle bar.

E All dimensions are in millimetres or metres unless otherwise specified.



CON CAST PIPE

R.R. #3, Guelph, Ontario N1H 6H9
Tel: 1-800-668-PIPE (7473)

CON CAST PIPE

No. 710

**RIVETED GRATING
FOR
DITCH INLET**