



CON CAST PIPE

box units



discover what tomorrow holds

mass production in 9 standard sizes

north america's
largest box unit
manufacturer



One thing never on hold is your order. As North America's largest precast reinforced concrete box unit manufacturer, Con Cast Pipe meets your project requirements faster and more efficiently with the ability to produce 8-10 units per day. Count on us for a quick turnaround.

Choose from 9 standard sizes. Or talk to our innovative engineering team about your custom application. Con Cast Pipe box units can be designed to accommodate highway, railway, airport or other loading conditions.

All box units are manufactured to Ontario Provincial Standard Specifications (OPSS). Con Cast Pipe also adheres to the Ontario Concrete Pipe Association Plant Prequalification Program (PPP) which emphasizes strict quality control measures and proven life cycle advantages.

full contact support

Everyone's in the loop with our full service approach. We work with you from project start to finish, providing engineered solutions, pre-construction meetings, shipping expertise and on-site support during installation.



Wide range of uses:

- Culverts
- Sewers including Trunk Sewers
- Retention Tanks
- Pedestrian Tunnels
- Conveyor tunnels
- Storage Bins and more!

lifting anchors

radius & bends



joint venture



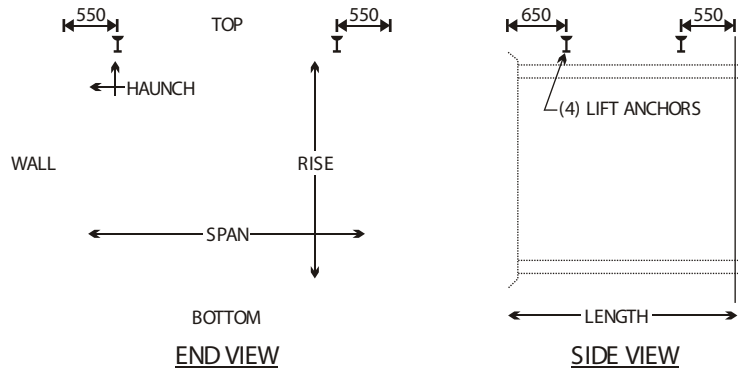
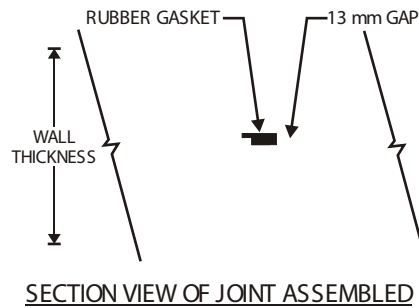
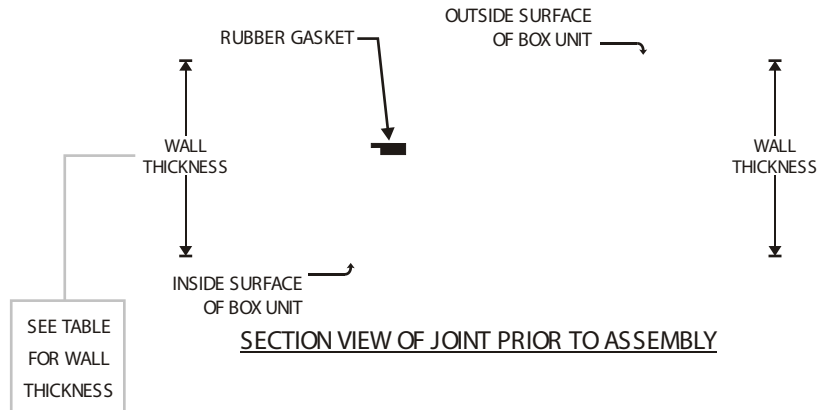
C on C Cast Pipe was the first to use a pre-lubricated gasket for the installation of box units. The gasket increases water tightness and reduces installation time as the gasket arrives on site already attached.

To add to the performance of the box unit, a variety of jointing material is available including filter fabric, external joint wrap, and butyl rubber joint sealer.

custom features:

- flush end units
- bevelled end sections
- radius box sections
- bends manufactured to various degrees of deflection
- manhole tees
- plugs and caps
- units complete with holes to accommodate branch connections
- shorter lay lengths
- reducers and increasers
- cast-in dowels and inserts

conventional gasketed joints



PRECAST BOX CULVERT DIMENSIONS (mm)						APPROX. MASS	DESIGN EARTH COVER (m)	
SPAN	RISE	WALL	TOP/BOTTOM	HAUNCH	LENGTH		OPSS 1821	CAN/CSA-S6-00*
1800	900	200	200	200	2500	7,922 kg	0.6 - 5.5	LESS THAN 0.6
1829	1219	203	203	203	2438	9,004 kg	0.6 - 5.5	LESS THAN 0.6
2438	1219	203	203	203	2438	11,126 kg	0.6 - 3.6	LESS THAN 0.6
2438	1524	203	203	203	2438	11,883 kg	0.6 - 3.6	LESS THAN 0.6
2438	1829	203	203	203	2438	12,615 kg	0.6 - 3.6	LESS THAN 0.6
3048	1524	254	254	254	2438	16,730 kg	0.6 - 3.6	LESS THAN 0.6
3048	1829	254	254	254	2438	17,690 kg	0.6 - 3.6	LESS THAN 0.6
3048	2134	254	254	254	2438	18,617 kg	0.6 - 3.6	LESS THAN 0.6
3048	2438	254	254	254	2438	19,569 kg	0.6 - 3.6	LESS THAN 0.6

*Canadian Highway Bridge Design Code



ISO 9002 REGISTERED

299 Brock Road South, RR#3
 Guelph, Ontario N1H 6H9
 1-800-668-PIPE (7473)
 Fax: (519) 763-1956
 E-mail: sales@concastpipe.com
 www.concastpipe.com

For your custom applications, please contact Con Cast Pipe's engineering department to discuss radius and bend limitations, other box unit sizes and availability.