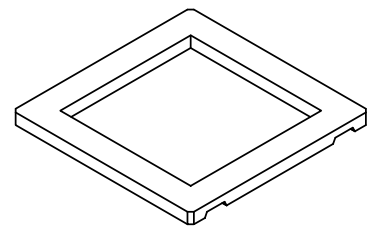
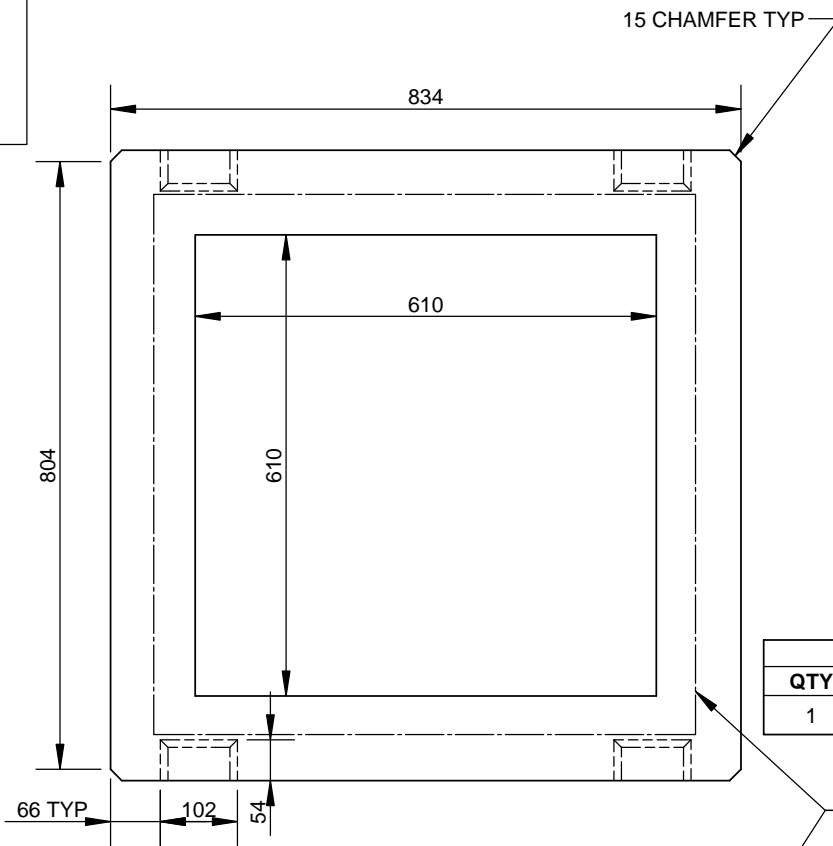


STENCIL
CCP-OAKVILLE
(HEIGHT)
(DATE OF MFG)

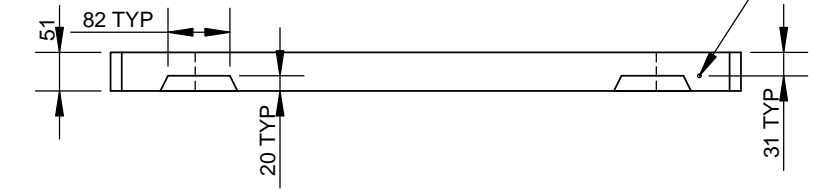


ISOMETRIC VIEW

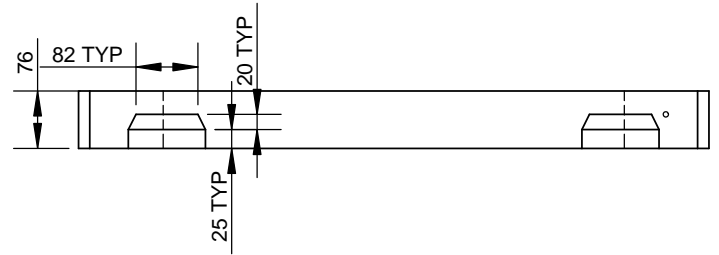
PRODUCT VARIABLES			
PART ID	BUNDLE QTY	UNIT HEIGHT	MASS (kg)
GC00501	1	51	36
GC00751	1	76	58
GCB00501	12	51	432
GCB00751	8	76	464

MATERIAL LIST		
QTY	TYPE	DESCRIPTION
1	E	D5 750 X 690 SQ. HOOP STL

D5 750 X 690
MIN As 15mm²
LAP 150mm OR
BUTT WELD
CENTRE REINFORCING



ELEVATION VIEW FOR 50mm RING



ELEVATION VIEW FOR 75mm RING

ENGINEER STAMP (IF REQUIRED)

ALL DIMENSIONS ARE IN mm
DRAWINGS ARE NOT TO SCALE
ALL VIEW AS POURED UNLESS SPECIFIED
CDW TO CSA ASTM A1064
WWF Fy = 485MPa (Deformed)
SHIPPED IN BUNDLE

MIN. CONC STRENGTH 30 MPa
TOLERANCES TO CSA A257.4
DRY CAST MIX
CEMENT TYPE HSb

CON CAST PIPE (CCP) STANDARD DRAWING

STD. OPSD 704.010 NOV 2014 REV3 PART GC00XX1

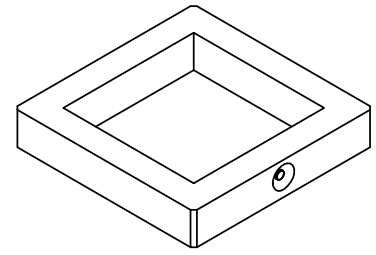
TITLE
CATCH BASIN GRADE RING
HEIGHT = 50mm, 75mm

REV.	DESCRIPTION	ENG.	DATE
1	REVISE AS PER LATEST STANDARD	MS	25APR2016
0	INITIAL RELEASE	SW	29FEB12

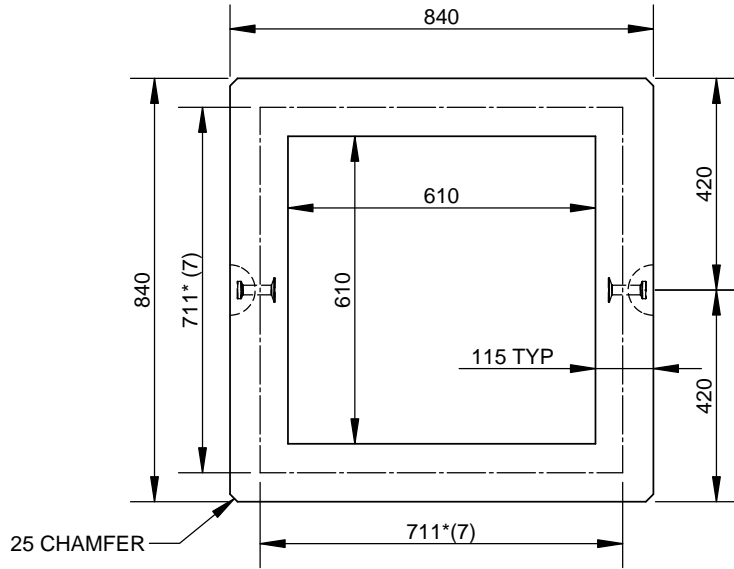
DRAWN BY	CHECKED BY	DATE	FILE	PAGE
SW	BA	29/FEB/12	CB RING	1 OF 1

STENCIL

CCP-GUELPH
(HEIGHT)
(DATE OF MFG)



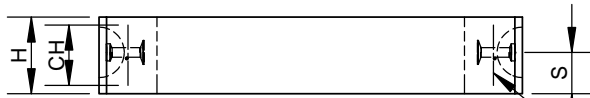
ISOMETRIC VIEW



PLAN VIEW

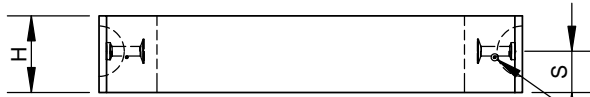
PRODUCT VARIABLES				
PART ID	H	S	CH	MASS (kg)
GC011251	127	64	75	104
GC011501	152	82	100	125

MATERIAL LIST		
QTY	TYPE	DESCRIPTION
2	E	4TON x 3" SLA
	E	4 X 4 W2.9/W2.9 (ALT DESIGN)
	E	W2.9 750 X 690 SQ. HOOP STL.



ELEVATION VIEW (MESH)

4X4 W2.9 / W2.9
LAP 150mm OR BUTT WELD
OR APPROVED EQV.
CENTRE REINFORCING
MIN (1) W2.9 IN CIRCUMF.



ELEVATION VIEW (HOOP)

W2.9 750 X 690 HOOP
LAP 150mm OR BUTT WELD
OR APPROVED EQV.
CENTRE REINFORCING

ENGINEER STAMP (IF REQUIRED)

ALL DIMENSIONS ARE IN mm
DRAWINGS ARE NOT TO SCALE
ALL VIEW AS POURED UNLESS SPECIFIED
WWF TO CSA ASTM A1064
WWF Fy = 485MPa (Deformed)
* CAGE DIMENSION
() WIRE SPACING

MIN. CONC STRENGTH 30 MPa
TOLERANCES TO CSA A257.4
WETCAST MIX
CEMENT TYPE HS_e

CON CAST PIPE (CCP) STANDARD DRAWING

STD. OPSD 704.010 NOV 2014 REV3 PART GC01XX1

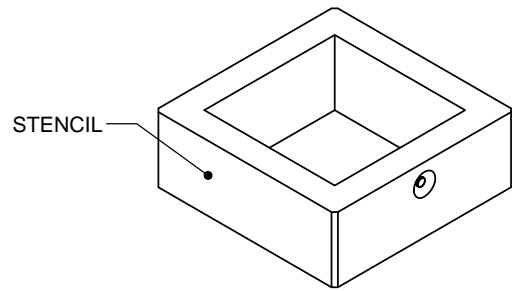
TITLE
CATCH BASIN GRADE RING
HEIGHT = 125mm, 150mm

REV.	DESCRIPTION	ENG.	DATE
2	REVISED AS PER LATEST STANDARD	MS	25APR2016
1	REINFORCING UPDATE	MS	03JULY14
0	INITIAL RELEASE	SW	29FEB12

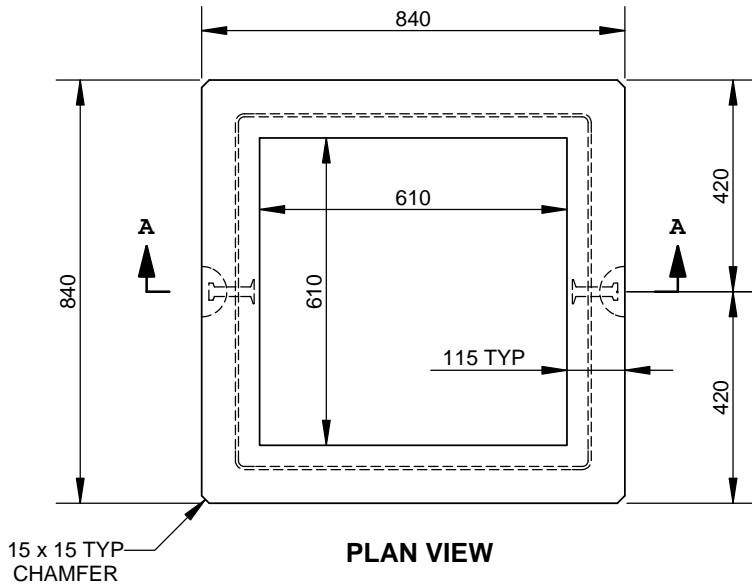
DRAWN BY	CHECKED BY	DATE	FILE	PAGE
SW	BA	29/FEB/12	CB RING WC	1 OF 1

STENCIL

CCP-OAKVILLE
 CSA A257.4
 OPSD 704.010
 600 X 600 X (H)
 TYPE HSe
 (DATE OF MFG)
 (MASS) kg



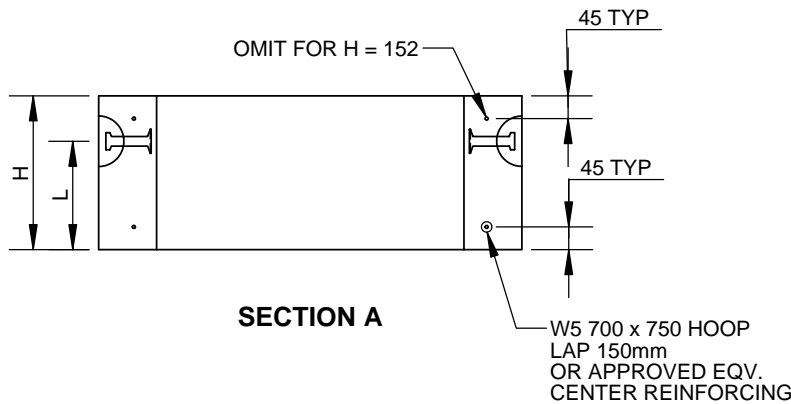
ISOMETRIC VIEW



PLAN VIEW

MATERIAL LIST		
QTY	TYPE	DESCRIPTION
2	E	4TON x 3" SLA
X	E	W5 700 X 750 SQ. HOOP STL.

PRODUCT VARIABLES				
PART ID	VARIABLE DIMENSIONS			MASS (kg)
	H	L	X	
GC01501	152	85	1	125
GC03001	305	230	2	251



SECTION A

ENGINEER STAMP (IF REQUIRED)

ALL DIMENSIONS ARE IN mm
 DRAWINGS ARE NOT TO SCALE
 ALL VIEW AS POURED UNLESS SPECIFIED
 CDW TO ASTM A496 Fy = 450 MPa (SMOOTH)

MIN. CONC STRENGTH 30 MPa
 TOLERANCES TO CSA A257
 DRY CAST MIX
 CEMENT TYPE HSe

CON CAST PIPE (CCP) STANDARD DRAWING

STD. OPSD 704.010 NOV 2014 REV3 PART GC0XXX1

TITLE
CATCH BASIN GRADE RING
 HEIGHT = 152, 305mm

2	MATERIAL LIST UPDATED	MS	25APR2016
1	INITIAL RELEASE	SM	29/JUN/15
0	FOR REVIEW	SM	11/JUN/15
REV.	DESCRIPTION	ENG.	DATE

DRAWN BY SM	CHECKED BY SW	DATE 29/JUN/15	FILE CB RING 305 Rev 1	PAGE 1 OF 1
----------------	------------------	-------------------	---------------------------	----------------