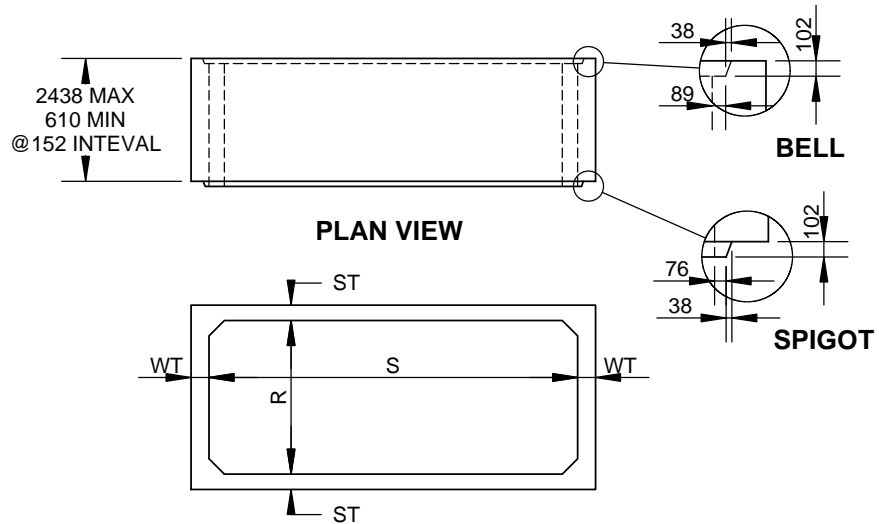


ISOMETRIC VIEW



TYPICAL SECTION

SPAN (S) = 1219, 1524, 1829, 2438								
S	X	R	ST	WT	HC	L (m)	MASS	
							kg/m	kg/pc
1219	X	1219	203	203	0	2.438	2867	6990
1524	X	1219	203	203	0	3.438	3174	10914
1829	X	1524	203	203	305	4.438	4250	18860
1829	X	1829	203	203	305	4.438	4557	20223
2438	X	1219	203	203	305	4.438	4557	20223
2438	X	2134	203	203	305	4.438	5478	24313
2438	X	2438	254	254	305	4.438	7245	32152

SPAN (S) = 2743, 3048, 3353, 3648								
S	X	R	ST	WT	HC	L (m)	MASS	
							kg/m	kg/pc
2743	X	1219	254	254	305	2.4384	6093	14857
2743	X	1524	254	254	305	2.4384	6477	15793
2743	X	1829	254	254	305	2.4384	6861	16729
2743	X	2134	254	254	305	2.4384	7245	17666
3048	X	1219	254	254	305	2.4384	6477	15793
3048	X	2743	254	254	305	2.4384	8397	20475
3048	X	3048	254	254	305	2.4384	8781	21411
3353	X	1219	305	305	305	2.4384	8294	20225
3353	X	1524	305	305	305	2.4384	8755	21349
3353	X	1829	305	305	305	2.4384	9216	22472
3353	X	2134	305	305	305	2.4384	9677	23596
3353	X	2438	305	305	305	2.4384	10138	24719
3658	X	1219	305	305	305	2.4384	8755	21349
3658	X	1524	305	305	305	2.4384	9216	22472
3658	X	1829	305	305	305	2.4384	9677	23596
3658	X	2134	305	305	305	2.4384	10138	24719
3658	X	2438	305	305	305	2.4384	10598	25843
3658	X	2743	305	305	305	2.4384	11059	26967
3658	X	3048	305	305	305	2.4384	11520	28090

SPAN (S) = 3962, 4267, 4877								
S	X	R	ST	WT	HC	L (m)	MASS	
							kg/m	kg/pc
3962	X	1524	305	305	305	2.4384	9677	23596
3962	X	1829	305	305	305	2.4384	10138	24719
3962	X	2134	305	305	305	2.4384	10598	25843
3962	X	2438	305	305	305	2.4384	11059	26967
3962	X	2743	305	305	305	2.4384	11520	28090
3962	X	3048	305	305	305	2.4384	11981	29214
4267	X	1829	305	305	305	2.4384	10598	25843
4267	X	2134	305	305	305	2.4384	11059	26967
4267	X	2438	305	305	305	2.4384	11520	28090
4267	X	2743	305	305	305	2.4384	11981	29214
4267	X	3048	305	305	305	2.4384	12442	30338
4877	X	1829	305	305	305	2.4384	11520	28090
4877	X	2134	305	305	305	2.4384	11981	29214
4877	X	2438	305	305	305	2.4384	12442	30338
4877	X	2743	305	305	305	2.4384	12902	31461
4877	X	3048	305	305	305	2.4384	13363	32585

SPAN (S) = 5486, 6096, 6401								
S	X	R	ST	WT	HC	L (m)	MASS	
							kg/m	kg/pc
5486	X	1524	305	305	305	2.4384	11981	29214
5486	X	1829	305	305	305	2.4384	12442	30338
5486	X	2134	305	305	305	2.4384	12902	31461
5486	X	2438	305	305	305	2.4384	13363	32585
5486	X	2743	305	305	305	2.4384	13824	33708
5486	X	3048	305	305	305	2.4384	14285	34832
6096	X	1524	305	305	305	2.4384	12902	31461
6096	X	1829	305	305	305	2.4384	13363	32585
6096	X	2134	406	406	305	2.1336	18688	39873
6096	X	2438	406	406	305	1.9812	19302	38242
6096	X	2743	406	406	305	1.9812	19917	39459
6096	X	3048	406	406	305	1.8288	20531	37547
6401	X	1524	406	406	305	2.1336	18074	38562
6401	X	1829	406	406	305	2.1336	18688	39873
6401	X	2134	406	406	305	1.9812	19302	38242
6401	X	2438	406	406	305	1.9812	19917	39459

**GENERAL NOTES:**

- (1) CUSTOM SIZE NOT IN THE TABLE SHOWN IS AVAILABLE. S AND R ARE PREFERRED TO HAVE 152 mm (6") INTERVAL. 51 mm (2") INVEVAL IS AVAILABLE UPON REQUEST.
- (2) WALL (WT) AND SLAB THICKNESS (ST) HAVE INTERVAL OF 52 (2") BETWEEN 152 mm (6") - 610 mm (24")
- (3) 406 mm (14") HC IS AVAILABLE. OTHER SIZE OF HANUCH IS AVAILABLE UPON REQUEST.
- (4) WALL AND SLAB THICKNESS IN THE TABLE ARE TYPICAL FOR CHBDC CL625-ONT LOADING WITH EARTH COVER BETWEEN 0 - 3.6m.
- (5) MASS IS APPROXIMATE BASED ON 2480 kg/m<sup>3</sup> DENSITY OF CONCRETE.
- (6) SHIPPING CAPACITY GOVERNS MAXIMUM SIZE AND LAY LENGTH
- (7) LIFTING DEVICES ARE DAYTON SWIFT LIFT ANCHOR OR EQUIVALENT
- (8) LONGER LAY LENGTH (L UPTO 3658) IS AVAILABLE UPON REQUEST
- (9) WHEN THE HEIGHT (R+2ST) IS LARGER THAN 2540, BOX UNIT WILL BE SHIPPED FLOWER POT AND TO BE ROTATED ON THE JOB SITE.
- (9) CHAMFER EDGE IS AVAILABLE UPON REQUEST

ALL DIMENSIONS ARE IN mm UNLESS SPECIFIED TOLERANCES TO CSA A23.4-09  
DRAWINGS ARE NOT TO SCALE

CON CAST PIPE (CCP) STANDARD DRAWING

STD: CCP ENG GUIDE B 6.1.3. PART: BA-SIZEGUIDE

TITLE: PRECAST BOX CULVERT SIZE GUIDE

1	INITIAL RELEASE	SW	14JUL14	DRAWN BY	CHECKED BY	DATE	FILE	PAGE
REV.	DESCRIPTION	ENG.	DATE	SW	AP	19/OCT/2011	Box Size Guide.SLDRW	1 OF 1